



# **BSc (Hons) Psychology with Counselling Programme Handbook**



**The British  
Psychological Society**  
Accredited

Published January 2022  
V3

## Introduction to the Programme

Welcome to the BSc (Hons) Psychology with Counselling degree programme!

We are so pleased that you have chosen to study the fascinating world of psychology with us. We hope that you find the course intellectually stimulating, informative and enjoyable. You are a valuable member of our learning community and we are looking forward to hearing your thoughts and ideas across each of our modules.

The BSc (Hons) Psychology with Counselling degree programme is made up of the core modules listed at the end of this document that are studied across levels four, five and six. An outline of the content and assessment methods of each of the modules can be found in the Module Definition Form section of iLearn. Each 20-credit module is equivalent to approximately 200 hours of self-guided learning. You will also be supported through each module by academic staff who will bring key topics to life through interactive lessons, discussions and activities.

The BSc (Hons) Psychology with Counselling degree programme will introduce you to the core areas of psychology and will help to build your confidence, knowledge and skill in both understanding and using research.

We look forward to working with you on your learning journey and supporting you to achieve your academic and professional goals.

Dr Nigel Wilson  
Programme Leader



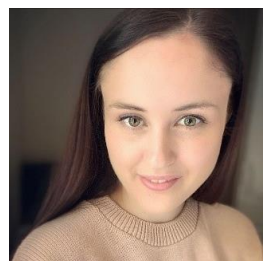
## Introduction to the School

Arden University's BSc (Hons) Psychology with Counselling programme sits within the School of Psychology and Social Science.

The School is headed by **Dr Gail Steptoe-Warren**. Gail is a Chartered Member of the British Psychological Society, a Full Member of the Division of Occupational Psychology, and a registered occupational psychologist with the Health and Care Professions Council. Gail has worked within the HEI sector for over 16 years, having achieved Senior Fellow status of the HEA, as well as worked in a consultancy capacity within the public, private, voluntary, and charitable sectors.



Supporting Gail is the Deputy Head of School Dr Sophie Ward. Sophie is a Chartered Psychologist and has been working in Higher Education for over 8 years, both in professional services and academia. Sophie is also a qualified test user (ability and personality) and mental health first aider, who continues to work with public sector organisations such as the Fire and Rescue Service and National Health Service. Sophie's main area of interest is Occupational Psychology, with her most recent research exploring the sources of and reactions to work frustration, testing multiple models using mixed methodology.



The School of Psychology also benefits from a team of multi-disciplinary lecturers who bring a wealth of academic and practitioner experience with them. You will meet our amazing team across your learning journey.

Welcome to the School of Psychology and Social Science!

## BPS Accreditation

### The British Psychological Society

The British Psychological Society (BPS) is the representative body for psychology and psychologists in the UK. They are responsible for the development, promotion and application of psychology for the public good. Arden University's BSc (Hons) Psychology with Counselling programme is accredited by the BPS. Students who successfully complete the programme, with a minimum pass grade of 40% on the Counselling Research Project, and graduate with a lower 2nd class honours degree or higher will be eligible for the Graduate Basis for Chartered Membership (GBC) of the British Psychological Society - the basic requirement to train as a professional psychologist.

### What does the student need to do?

Once you have enrolled onto the BSc (Hons) Psychology programme and completed the induction, Arden University will register your membership with the BPS, and cover the cost of membership whilst you are actively studying. This will provide you with a wide range of resources that may help you during your studies. BPS membership is a mark of quality that prospective students and employers understand and value. It keeps open the widest range of training, development and employment opportunities for graduates.

### Personal Tutoring Scheme and the BPS

As part of the BPS accreditation you will be provided with a personal academic tutor throughout the degree programme. The personal academic tutor will play a vital role in supporting your learning throughout your time at Arden. The Academic Personal Tutor will be the first point of contact on academic matters for students and will help to guide you through your academic journey, providing you with individual and group academic support and guidance and acting as a gateway to wider university support staff.

Further details can be found on the BPS website <http://www.bps.org.uk/>



The British  
Psychological Society  
Accredited

<b>1. Programme Code</b>						
<b>2. Programme Title</b>	BSc (Hons) Psychology with Counselling					
<b>3. Target Award Title</b>	BSc (Hons) Psychology with Counselling					
<b>4. Exit Award Title(s)</b>	Certificate of Higher Education in Psychology (120 credits) Diploma of Higher Education in Psychology (240 credits) BSc (Hons) Psychology with Counselling (360 credits)					
<b>5. Subject area</b>	Psychology					
<b>6. School</b>	Psychology and Social Sciences					
<b>7. Programme Team Leader(s)</b>	Dr Nigel Wilson					
<b>8. Programme Type</b>	Specialist					
<b>9. Delivery Model</b>	DL F/T		BL F/T	X	Apprenticeship	
	DL P/T	X	BL P/T	X	Other	
<b>Where delivery model identified as 'Other' please provide details</b>	N/A					
<b>10. Location of delivery</b>	Online and Birmingham London Ealing, Holborn and Tower Hill Manchester					
<b>11. Proposed Start date</b>	January 2022					
<b>12. Reference points</b>	<p>QAA Subject Benchmark Statements – Psychology – November 2019</p> <p>On graduating with an honours degree in psychology, students are able to:</p> <p><b>Subject-specific skills</b></p> <p>4.4</p> <p>i. apply multiple perspectives to psychological issues, recognising that psychology involves a range of research methods, theories, evidence and applications</p> <p>ii. integrate ideas and findings across the multiple perspectives in psychology and recognise distinctive psychological approaches to relevant issues</p> <p>iii. identify and evaluate patterns in behaviour, psychological functioning and experience</p> <p>iv. generate and explore hypotheses and research questions drawing on relevant theory and research</p> <p>v. carry out empirical studies involving a variety of methods of data collection, including experiments, observation, questionnaires, interviews and focus groups</p> <p>vi. analyse, present and evaluate quantitative and qualitative data and evaluate research findings</p> <p>viii. employ evidence-based reasoning and examine practical, theoretical and ethical issues associated with the range of methodologies</p> <p>viii. use a variety of psychological tools, including specialist software</p>					

laboratory equipment and psychometric instruments  
ix. apply psychological knowledge ethically and safely to real-world problems  
x. critically evaluate psychological theory and research  
xi. carry out an extensive piece of empirical research that requires them individually to demonstrate a range of research skills, including planning, considering and resolving ethical issues, analysis and dissemination of findings.

### **Generic skills**

#### 4.5

i. communicate effectively. Effective communication involves developing a cogent argument supported by relevant evidence and being sensitive to the needs and expectations of an audience. This is accomplished through specific demands to write both essays and scientific reports, and through experience in making oral presentations to groups  
ii. demonstrate numerical reasoning skills  
iii. be computer literate, displaying at the very least skill in the use of word processing databases and analytic software packages.  
iv. retrieve and organise information effectively. Psychology graduates are familiar with collecting and organising stored information found in library books and journal collections, and online, critically evaluating primary and secondary sources  
v. recognise what is required from effective teamwork and articulate their own strengths and weaknesses in this regard. The complexity of the factors that shape behaviour and social interaction will be familiar to psychology graduates and will make them more aware of successful and problematic interpersonal relationships  
vi. take responsibility for their own learning and skill development; this will include effective personal planning, self-reflection and project management skills, so they become more independent and pragmatic as learners.

### **Subject knowledge and understanding**

#### 6.3

understand the scientific underpinnings of psychology as a discipline, its historical origins, development and limitations  
recognise the inherent variability and diversity of psychological functioning and its significance  
demonstrate systematic knowledge and critical understanding of a range of influences on psychological functioning, how they are conceptualised across the core areas as outlined in paragraphs 4.4 and 4.5 and how they interrelate  
demonstrate detailed knowledge of several specialised areas and/or applications, some of which are at the cutting edge of research in the discipline  
demonstrate a systematic knowledge of a range of research paradigms, research methods and measurement techniques, including statistics and probability, and be aware of their limitations

### **Subject-specific skills**

#### 6.4

	<p>i. reason scientifically, understand the role of evidence and make critical judgements about arguments in psychology</p> <p>ii. adopt multiple perspectives and systematically analyse the relationships between them</p> <p>iii. detect meaningful patterns in behaviour and evaluate their significance</p> <p>iv. recognise the subjective and variable nature of individual experience</p> <p>v. pose, operationalise and critique research questions</p> <p>vi. demonstrate substantial competence in research skills through practical activities</p> <p>vii. reason analytically and demonstrate competence in a range of quantitative and qualitative methods</p> <p>viii. competently initiate, design, conduct and report on an empirically based research project under appropriate supervision, and recognise its theoretical, practical and methodological implications and limitations</p> <p>ix. be aware of ethical principles and approval procedures and demonstrate these in relation to personal study, particularly with regard to the research project, and be aware of the ethical context of psychology as a discipline.</p> <p><b>Generic skills</b></p> <p>6.5</p> <p>i. communicate ideas and research findings by written, oral and visual means</p> <p>ii. interpret and use numerical, textual and other forms of data</p> <p>iii. be computer literate, for the purposes of furthering their own learning and in the analysis and presentation of ideas and research findings</p> <p>iv. solve problems by clarifying questions, considering alternative solutions and evaluating outcomes</p> <p>v. be sensitive to, and take account of, contextual and interpersonal factors in groups and teams</p> <p>xi. undertake self-directed study and project management, in order to meet desired objectives</p> <p>vii. take charge of their own learning and reflect and evaluate personal strengths and weaknesses for the purpose of future learning.</p>
<p><b>13. Professional, Statutory &amp; Regulatory Bodies (PSRB)</b></p>	<p><i>British Psychological Society (BPS)</i></p>

<p><b>14. Programme aims</b></p>	
<p>The BSc (Hons) Psychology with Counselling degree aims to:</p> <ul style="list-style-type: none"> <li>▪ produce a scientific understanding of mind, brain, behaviour and experience and of the complex interactions between these;</li> <li>▪ present multiple perspectives on the discipline in a way that fosters critical evaluation in psychology and counselling</li> </ul>	

- lead to an understanding of real life applications of psychological theory to the full range of experience and behaviour;
- an understanding of a variety of different counselling perspectives and their implications for practice
- develop an understanding of the role of empirical evidence in the creation and constraint of theory and also in how theory guides the collection and interpretation of empirical data;
- provide a range of research skills and methods for investigating experience and behaviour, culminating in an opportunity to conduct research independently;
- develop knowledge leading to an ability to appreciate and critically evaluate theory, research findings, and applications; and
- foster positive attitudes to learning through innovative, effective and clearly aligned teaching, learning and assessment methods; by maintaining a curriculum that is up-to-date, and by providing a positive and encouraging environment for learning.

### 15. Programme Entry Requirements

- Passes at grade C or above in three subjects at GCSE level including mathematics or academic equivalent.
- For applicants without GCSE mathematics or equivalent, provided they meet all other entry criteria there is the option of a Mini Maths module, which runs alongside their induction modules and must be attended and completed.
- Completion of a recognised Access Programme or equivalent.
- IELTS 6.0 or equivalent for students whose medium of prior learning was not English.
- Candidates who demonstrate an ability to study the programme as evidenced through a personal statement (of between 350-500 words) that addresses their motivation for undertaking the programme; including their references, relevant prior experience and qualifications.

### 16. Graduate Attributes

- GA1. Discipline Expertise: Knowledge and understanding of chosen field**  
Students will possess a range of skills to operate within this sector, have a keen awareness of current developments in working practice and be well positioned to respond to change.
- GA2. Effective Communication**  
Students will communicate effectively both verbally and in writing, using a range of media widely used in relevant professional context. They will be IT, digitally and information literate.
- GA3. Responsible Global Citizenship**  
Students will understand global issues and their place in a globalised economy, ethical decision-making and accountability. They will adopt self-awareness, openness and sensitivity to diversity in culture.
- GA4. Professional Skills**  
Students will perform effectively within the professional environment. They will work within a team, demonstrating interpersonal skills such as effective listening, negotiating, persuading and presentation. They will be flexible and adaptable to changes within the professional environment.
- GA5. Reflective Practitioner**  
Students will undertake critical analysis and reach reasoned and evidenced decisions. They will contribute problem-solving skills to find innovative solutions.
- GA6. Lifelong Learning**  
Students will manage employability, utilising the skills of personal development and planning in different contexts to contribute to society and the workplace.

### Mapping of Module to Graduate Attribute

Module	Graduate Attribute
Introduction to studying psychology	Discipline Expertise
Introduction to Research Methods	Discipline Expertise
Social Psychology	Effective Communication Responsible Global Citizenship
Biological Psychology	Effective Communication
Developmental Psychology	Effective Communication
Cognitive Psychology	Effective Communication
Quantitative Research Methods	Discipline Expertise
Personality and Intelligence	Effective Communication
Qualitative Research Methods	Effective Communication
Positive Psychology	Reflective Practitioner
Introduction to Counselling Psychology	Responsible Global Citizenship Lifelong learning
Health and Psychological Well-being	Discipline Expertise Effective Communication
Core Counselling Skills	Reflective Practitioner
Counselling Psychology, Mental Health and Illness	Responsible global citizenship
Psychological Assessment and Formulation	Discipline Expertise
Managing the Therapeutic Process	Discipline Expertise
Counselling Research Project	Discipline Expertise

### 17. Learning, teaching and assessment methods and strategies

Learning and teaching methods and strategies are delivered through a blended and integrated learning and teaching pedagogy that includes independent learning and working with others. That is:

#### Online learning

##### Independent

- Independent and directed student study, supported throughout by comprehensive online multi-media teaching materials and resources and activities accessed through our Virtual Learning Environment
- Guided group / project-based work
- Research tasks
- Discussion forums where students discuss and critically engage with themes emerging from the online materials they engage with, following the posing of questions or propositions, case studies or similar by either lecturer or students themselves
- Podcasts/online tutorials e.g. SPSS and Gorilla

##### Working Together

- Online webinars facilitated by VOIP's where theory and practice are integrated.



- Live chats
- Virtual drop in office-hours
- Coffee mornings

**Blended learning**

For blended learning delivery lectures and seminars will be delivered that include group discussion, topic related activities, role-plays, case study analysis and reflective practice which is supported by student meetings and academic tutor support. This is supported with online activities outlined above.

Based upon the profile of our typical student body, our strategy enables students to engage with a variety of learning tools that best meet their personal circumstances.

There is a requirement for written work at all levels including reports, essays, practical tasks, developed plans, , portfolios of work, poster presentations as well as oral work such as group discussions, presentations etc., and our assessment policy informs how feedback is supplied by lecturers at the formative and summative assessment stage.

18. Intended programme learning outcomes and the means by which they are achieved and demonstrated		
Learning outcomes	The means by which these outcomes are achieved	The means by which these outcomes are assessed
At the end of this course you, the student, will be able to:		
1. Understand the scientific underpinnings of psychology and counselling as a discipline, its historical and contemporary developments and limitations as well as socio-cultural differences.	Within each module a historical and contemporary view will be outlined. Each of the modules will adopt a global approach, outlining socio-cultural differences in both research undertaken and behaviour and attitudes across cultures.	Coursework
2. Reason scientifically, consider multiple perspectives consider ethical issues and make critical judgments about arguments in psychology and counselling	At level 4 students study introduction to studying psychology that will set the foundation for developing student academic skills including literature reviewing and analysis; this will allow an understanding that is fed through and developed throughout the programme of study. Ethical considerations are considered throughout each module.	Coursework
3. Demonstrate knowledge and critical thinking in the core domains of psychology; biological, cognitive, developmental, individual differences, social, , conceptual and historical developments and research methods.	The core domains of psychology are introduced in introduction to studying psychology and are studied in more detail at level four and level 5 where all criteria for BPS accreditation criteria is met. Whilst more specific counselling psychology modules are covered at level 5 and 6 reference and analysis of the core areas are embedded within each of these modules.	Coursework
4. Detect meaningful patterns in behaviour, recognise the subjective nature of individual experience and critically evaluate their significance.	Patterns in behaviour are evaluated by evaluating theories and research within each module. Evaluation will be developed throughout level 4 with the adoption of a more critical analysis as students' progress through each module and develop their academic evaluative skills.	Coursework
5. Demonstrate a systematic knowledge of a range of research paradigms, research methods, including both quantitative and qualitative data analysis and be aware of their strengths and limitations.	Research paradigms and research methods are discussed in terms of academic research studies within each module as well as assessed within introduction to research methods, quantitative research methods, qualitative research methods and the dissertation project.	Coursework
6. Initiate, design, conduct and report on empirically based research under appropriate supervision (posing, operationalising and critically evaluating research questions), and recognise ethical, theoretical practical and methodological strengths and limitations in conducting psychological and	Students will begin to understand the design and ethical issues involved in conducting research in the introduction to research methods module. This will be further enhanced throughout the programme with assessments in the design of research in Quantitative Research Methods Qualitative Research Methods	Coursework

counselling research	Research Project	
7. Communicate psychological findings in written, visual and oral form using numerical, textual and other forms of data.	Students are required to contribute to group discussions, online forums and complete activities where they develop their communication skills. Students also develop communication skills in their assessments through writing (reports, essays, portfolios, posters) as well as oral presentations (voice over presentations).	Coursework
8. Develop academic skills (e.g. literature reviewing, reflection, academic writing, critical analysis) as well as graduate attributes (discipline expertise, effective communication, responsible global citizenship, professional skills, reflective practitioner, lifelong learning).	Academic skills are embedded within both the learning and assessment on each module. Scaffolded formative feedback is provided throughout the programme of study with full formative feedback on assessments at level 4 and then partial in level 5 and 6. This helps students become more independent learners. Within each module a graduate attribute is included as a learning outcome with all attributes being covered more than once throughout the programme. Within counselling modules students will develop listening skills, as well as case analysis skills, understanding of psychometric assessment and treatment for counselling assessment and intervention,	Coursework

### 19. Summary of modules and mapped programme learning outcomes

Level	Module title	Module type <i>Compulsory (C) or Optional (O)</i>	Identified pinned modules	LO 1	LO 2	LO 3	LO 4	LO 5	LO 6	LO 7	LO 8	GA1	GA2	GA3	GA4	GA5	GA6
4	Introduction to Studying Psychology	(C)	P	X	X	X				X	X	X					
4	Introduction to Research Methods	(C)	P	X	X	X	X	X	X	X	X	X					
4	Social Psychology	(C)		X	X	X	X			X	X		X	X			
4	Biological Psychology	(C)		X	X	X	X			X	X		X				
4	Developmental Psychology	(C)		X	X	X	X			X	X		X				
4	Cognitive Psychology	(C)		X	X	X				X	X		X				
5	Quantitative Research Methods	(C)	P	X	X	X	X	X	X	X	X	X					
5	Personality and Intelligence	(C)	P	X	X	X	X	X	X	X	X		X				
5	Qualitative Research Methods	(C)		X	X	X	X	X	X	X	X		X				
5	Positive Psychology	(C)		X	X	X	X	X	X	X	X					X	
5	Introduction to Counselling Psychology	(C)		X	X	X	X			X	X				X		X
5	Core Counselling Skills	(C)		X	X	X	X			X	X					X	
6	Health and Psychological wellbeing	(C)		X	X	X	X			X	X		X	X			
6	Counselling Research Project	(C)		X	X	X	X	X	X	X	X		X				

6	Psychological Assessment and Formulation	(C)		X	X	X			X	X		X					
6	Counselling Psychology, Mental Health and Illness	(C)		X	X	X			X	X				X			
6	Managing the Therapeutic Process	(C)		X	X	X			X	X		X					

